



4-H Ontario Provincial Judging Competition 2023

Supported by Kubota Canada Ltd.





4-H Ontario Provincial Judging Competition 2023

Supported by Kubota Canada Ltd.

4-H Ontario Provincial Judging Competition 2023

Supported by Kubota Canada Ltd.

One of 4-H Ontario's core competencies is critical thinking. This skill is developed throughout all aspects of the 4-H Ontario program from the local club to provincial events and national events. Critical thinking is a foundational skill that allows people to succeed in all aspects of their lives within and outside of the 4-H Ontario program. In 2020, 4-H Ontario local and regional volunteers rallied together to create wonderful learning opportunities around critical thinking for 4-H'ers. These judging competitions were well received by participants and 4-H Ontario staff received requests for a provincial competition option. Learning from our volunteers across the province, 4-H Ontario is excited to be hosting a virtual Provincial 4-H Judging Competition open to all 4-H Ontario participants in 2023.

The competition will run from July 15 to August 15. A virtual award presentation will take place in August to recognize competitors, sponsors and volunteers involved in the competition.

OBJECTIVES OF THE COMPETITION

1. To provide youth, enrolled as a member in good standing with 4-H Ontario in 2023, to practice critical thinking skills through a provincial virtual judging competition.
2. To foster the future development of young judges for the agricultural industry in Canada.
3. To provide a high-profile and competitive judging experience for 4-H participants.

IMPORTANT DATES:

- July 15 – August 15: Judging competition is open and eligible for members to judge.
- Late August: Virtual evening award presentations

ELIGIBILITY:

1. Competitors must be 6 to 21 years of age as of December 31st, 2022.
The following are the categories:
 - Cloverbud: 6 to 8 years of age
 - Junior: 9 to 12 years of age
 - Intermediate: 13 to 15 years of age
 - Senior: 16 to 21 years of age

REGISTRATION

1. Registration is open, from the 4-H Ontario website. ([click here](#)) Each participant will be asked to create a login. An email will be sent to that email address to update the password.
<https://new.4-hontariojudging.ca/>
2. Judging will be open from July 15th to August 15th.
3. Competition registration fee is at no charge.



4-H Ontario Provincial Judging Competition 2023

Supported by Kubota Canada Ltd.

CLASSES:

The Provincial 4-H Judging Competition will include classes representing the 4-H Canada Leadership Development Pillars: Sustainable Agriculture and Food Security, Community Engagement and Communications, Environment and Healthy Living, and Science and Technology. There will be a total of 8 classes for participants to judge, along with a general knowledge quiz.

The class listing includes:

1. Swine
2. Breeding Heifers
3. Goats
4. Horses
5. Cookies
6. Carrots
7. Wheat Sheafs
8. Lawnmowers
9. General Knowledge quiz (25 questions)

Judging criteria can be found in this handbook for your reference.

AWARDS:

1. All competitors will be scored on their placings.
2. Prizes will be awarded to the top three (3) overall placings in each age category. Prizes are as follows:
 - 1st - \$200
 - 2nd - \$125
 - 3rd - \$75
3. Recognition will also be given to the top judge in each class.
4. In the case of ties, quiz scores will be used to determine final placing with the higher score breaking the tie. If there is still a tie, then a random draw will be done to select the winner.
5. Final placing announcement and award recognition will take place in late August.

The 4-H Ontario Provincial 4-H Judging Competition is a fun and interactive way to keep those critical thinking skills polished.

Any questions about the judging competition please reach out to Kathryn at events@4-hontario.ca



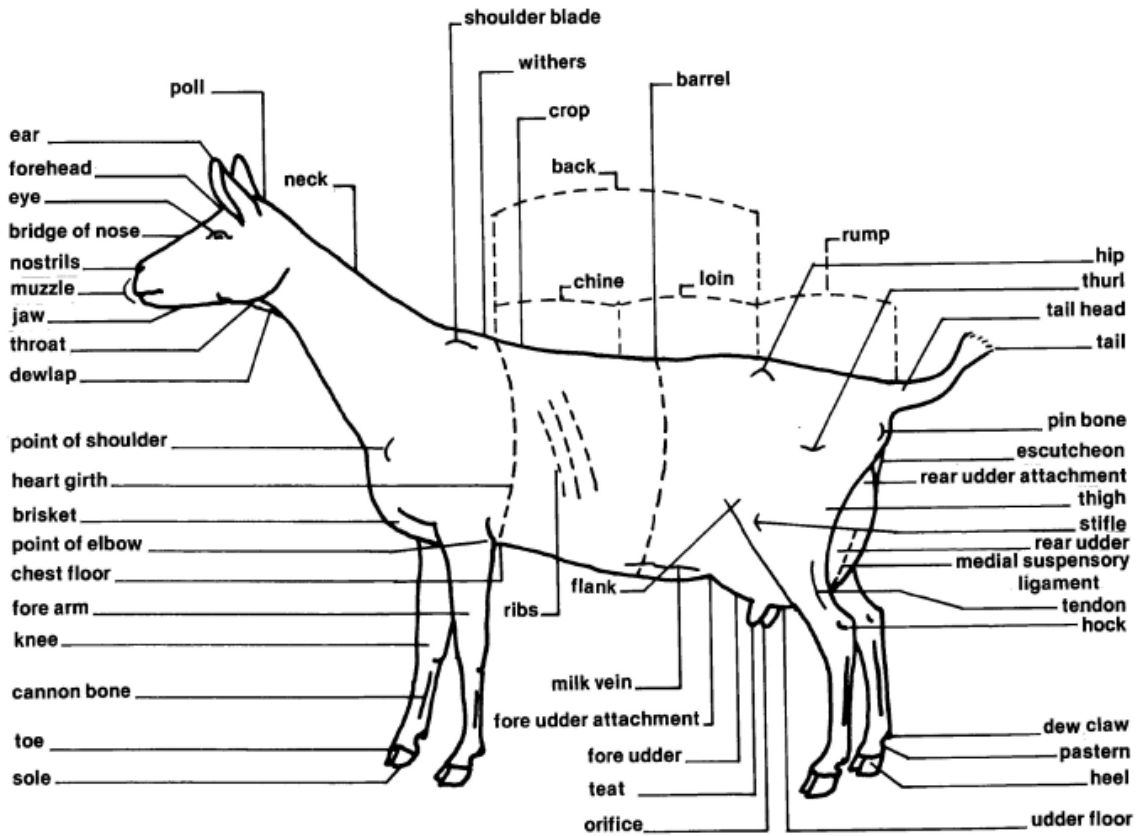
4-H Ontario Provincial Judging Competition 2023

Supported by Kubota Canada Ltd.

DAIRY GOAT JUDGING CARD

	Perfect Score
<p>DAIRY STRENGTH</p> <ul style="list-style-type: none"> • Head- broad muzzle, large nostrils, strong jaw, broad forehead • Shoulder Blades- set smoothly against chest and withers • Chest- wide floor, ample width between legs • Heart Girth- large and deep, full elbows and well sprung rib • Crops- well filled • Back- strong and straight with vertebrate well defined • Loin- broad and slightly arched, attached high and wide • Mid-Section- long and wide ribs highly and widely sprung • Neck- long and lean, blending smoothly into shoulder • Withers- well defined and wedge-shaped, “sharp” • Ribs- wide apart, wide rib bones, flat and long • Flanks- deep and refined • Thighs- curving to flat, wide apart with ample udder room • Skin- loose and pliable, fine hair • Udder- soft, pliable, free from excess tissue or edema • Bone- flat, strong, clean cut 	60
<p>RUMP</p> <ul style="list-style-type: none"> • Hips- wide, slightly higher than pins • Pins- wide apart and free from patchiness • Thurls-high and wide apart, considering stage of lactation • Tail-head and Tail - refined and level with backline with long and slender tail 	20
<p>FEET AND LEGS</p> <ul style="list-style-type: none"> • Feet – short, well-rounded, deep heels • Legs – strong, flexible pasterns, straight square fore legs • Hind legs – strong, wide, refined hocks • Fla, refined strong bone with well defined tendons. 	20

PARTS OF A GOAT

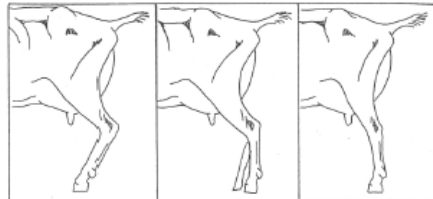


JUDGE'S EYE

The ideal slope of rump should resemble the middle diagram. The goat on the left has an extremely steep slope of rump, while the goat on the right has a level rump; both undesirable characteristics.



The set of the rear legs should resemble the middle diagram. The goat on the left has extremely sickled legs, while the goat on the right has extremely posty rear legs; both undesirable sets of legs.





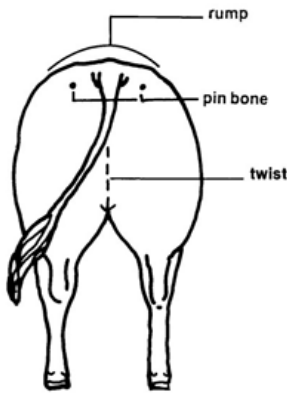
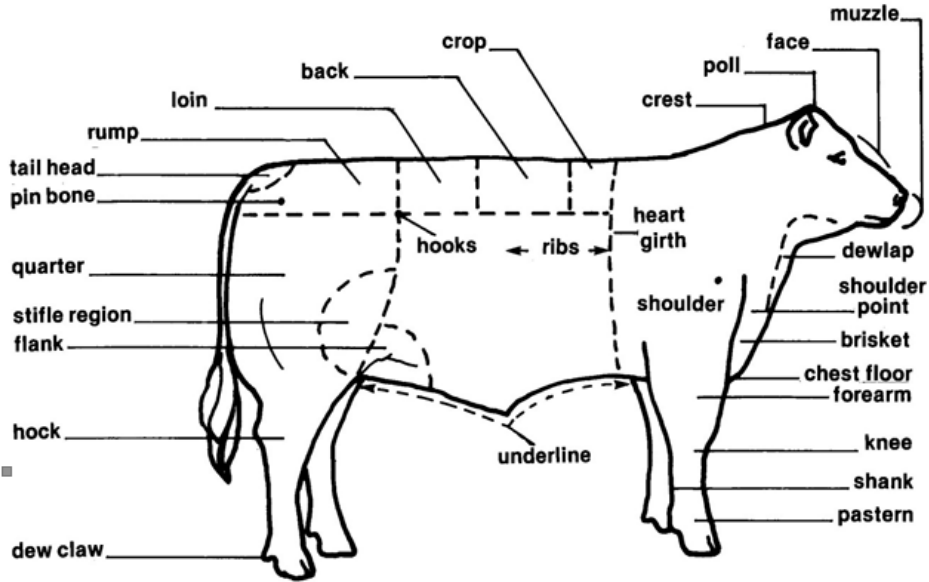
4-H Ontario Provincial Judging Competition 2023

Supported by Kubota Canada Ltd.

BEEF - BREEDING JUDGING CARD

	Perfect Score
SKELETAL STRUCTURE <ul style="list-style-type: none">• Shows good size and scale with length of body, rump and large hind quarter• Structurally sound on pasterns, hocks and legs• Strong on topline and through loin• Walks easily and freely on feet and legs	20
SIZE AND SCALE <ul style="list-style-type: none">• Feet- large frame, long body and rump• Muscling ripples when animal moves• Muscles bulge and appear in bunches, not smooth areas	20
FEET AND LEGS <ul style="list-style-type: none">• Breeding stock requires correct feet and legs to move and remain useful for many years	20
SEX CHARACTER <ul style="list-style-type: none">• Shows femininity about head, neck and shoulders• Well-developed, strongly attached, balanced udder with four evenly spaced and functioning teats	15
CONDITION <ul style="list-style-type: none">• Consider rate of gain, weight, muscle growth• Adequate, but not excess condition (fat covering)• Consider muscling and skeletal structure	15
MUSCLING <ul style="list-style-type: none">• Shows good muscling in rear quarter	10

PARTS OF THE BEEF ANIMAL



bow legged



correct



cow hocked



rear leg: correct pastern set



rear leg: weak pastern



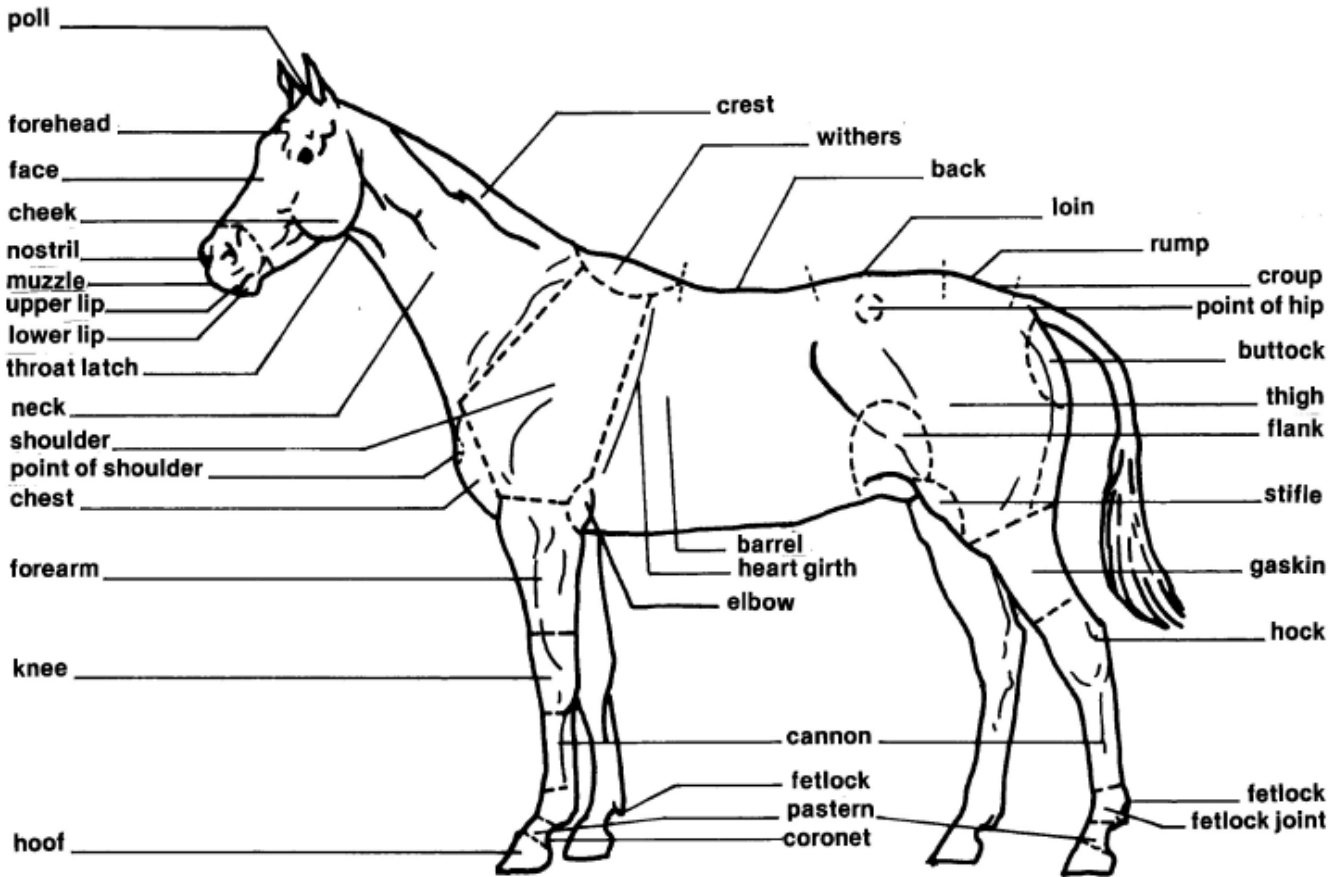
4-H Ontario Provincial Judging Competition 2023

Supported by Kubota Canada Ltd.

LIGHT HORSE JUDGING CARD

	Perfect Score
ACTION <ul style="list-style-type: none">• Travels straight with minimal swing to feet• Shows a light, springy step• Reaches out well• Carries head so eyes are level with withers	25
RUMP <ul style="list-style-type: none">• Thick, deep and well-muscled• Hind legs muscled both inside and outside• Hocks wide, deep and clean• Hoof well-shaped and pf proper size for horses• Legs set squarely under body	20
FOREHAND <ul style="list-style-type: none">• Clean, flat-boned, medium to short legs• Well proportioned head• Broad forehead with width between eyes• Medium to long, slightly arched neck• Long, smooth, well-muscled shoulder• Well defined withers in line with hips• Deep heart girth• Wide set forelegs blending well into shoulder• Clean knee joint; large forearm muscle	20
GENERAL APPEARANCE <ul style="list-style-type: none">• Bulging, visible muscles• Long, smooth, well-attached muscles	15
MID SECTION <ul style="list-style-type: none">• All parts blend together well• Strong loin and topline• Well turned and muscled croup	10
TYPE <ul style="list-style-type: none">• Evidence of functional ability• Medium size and weight• Long, sloping shoulder, long croup• Fairly short back and coupling• Well muscled fore and rear quarters• Deep chest with well sprung ribs	10

PARTS OF THE LIGHT HORSE





4-H Ontario Provincial Judging Competition 2023

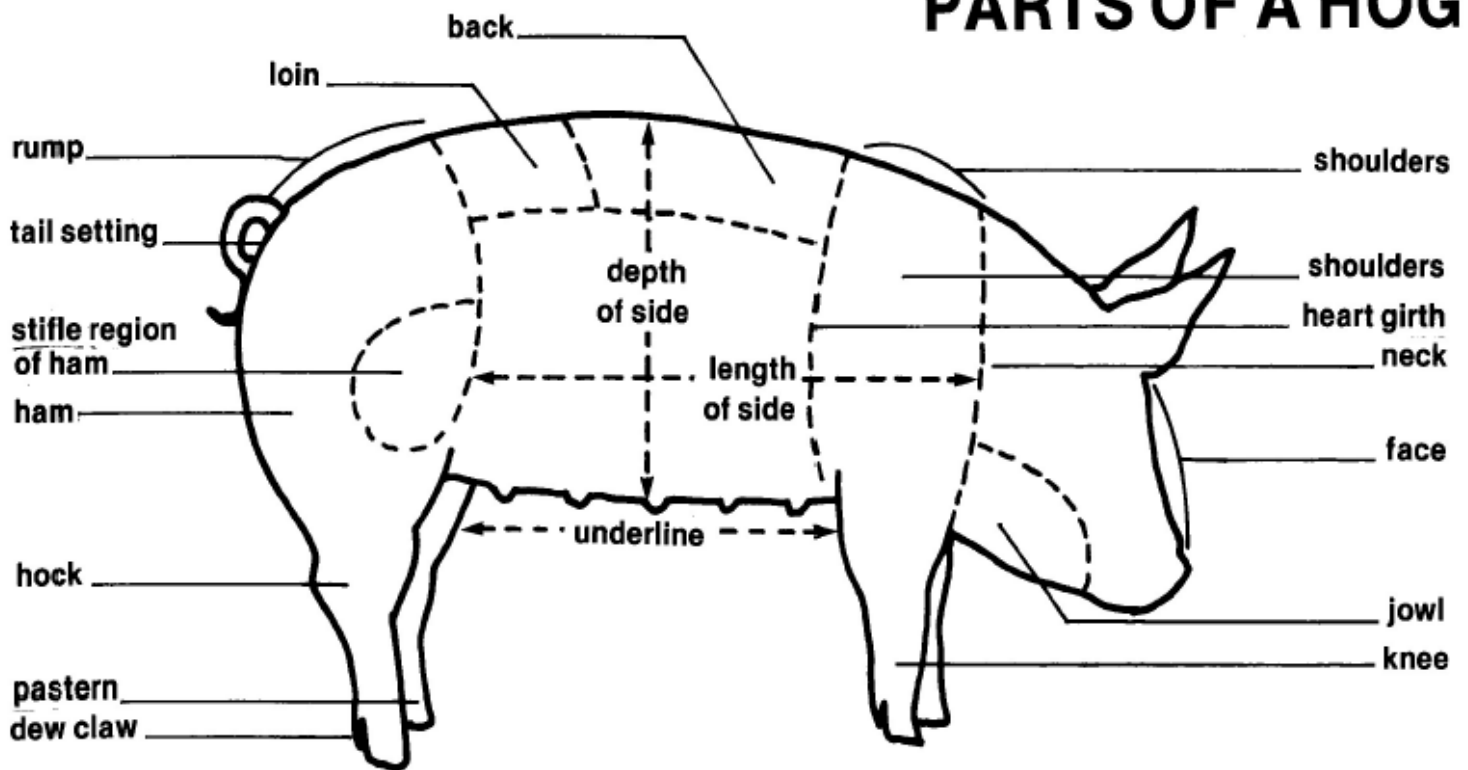
Supported by Kubota Canada Ltd.

MARKET HOG JUDGING CARD

Perfect Score

	Perfect Score
GENERAL BODY CONFIRMATION <ul style="list-style-type: none">• Long, deep body with limited arch on topline• Standing on sound legs• Wide chest• Deep, wide ham• Clean underline and flank	50
HEAD, NECK AND SHOULDER <ul style="list-style-type: none">• Clear eyes with no discharge• Trim jowl and neck• Muscling evident when walking	10
BACK AND LOIN <ul style="list-style-type: none">• Wide and Long• Good Muscling• Free from overfinish• Long and deep sides• Adequate spring of rib	15
RUMP AND HAM <ul style="list-style-type: none">• Long, wide, muscular rump• High tail setting• Moderate flare from loing• Clean, deep, well-muscled ham• Ham is firm and not flabby•	15
FINISH <ul style="list-style-type: none">• Minium amount of smooth finish• No sign of overfinish or excess fat	10

PARTS OF A HOG





4-H Ontario Provincial Judging Competition 2023

Supported by Kubota Canada Ltd.

LAWN MOWER JUDGING CARD

	Perfect Score
SIZE AND PRACTICALITY <ul style="list-style-type: none">• Suitable for needs• Practical mower type (electric, cordless, gas)• Features (bagger, mulcher)	30
SAFETY <ul style="list-style-type: none">• Include necessary safety features (mower cover, seat belt, roll over bar)• Well maintained• In good condition• Ability to perform required maintenance• Safe size for operator to operate	50
APPEARANCE <ul style="list-style-type: none">• Eye appealing• Clean• Durable	20



4-H Ontario Provincial Judging Competition 2023

Supported by Kubota Canada Ltd.

VEGETABLE JUDGING CARD

The standard entry for fruits and vegetables varies in number.

When judging a class, be sure that each entry displays the correct number of specimens.

	Perfect Score
UNIFORMITY AND TRUENESS TO TYPE <ul style="list-style-type: none">• All exhibits are of the same shape and size• All exhibits show the characteristics of their type• Each entry displays correct number of articles	30
CONDITION <ul style="list-style-type: none">• Overall quality of the exhibit• Freshness, freedom from blemishes or bruises due to insect, disease, spray or mechanical damage	30
FORM AND COLOUR <ul style="list-style-type: none">• Normal or ideal shape of species• Colour appropriate to class	25
SIZE <ul style="list-style-type: none">• Appropriate to exhibits• All specimens should be the same	15



4-H Ontario Provincial Judging Competition 2023

Supported by Kubota Canada Ltd.

SHEAVES JUDGING CARD

	Perfect Score
<p>GENERAL APPEARANCE</p> <p>PROPORTION (10)</p> <ul style="list-style-type: none">• Comparison of head and body <p>STANCE (10)</p> <ul style="list-style-type: none">• Stands erect on self-supporting stand	20
<p>QUALITY</p> <p>HEADS OF GRAIN (25)</p> <ul style="list-style-type: none">• Size and uniformity of heads• Freedom from disease and stains• Bright colour <p>STRAW (15)</p> <ul style="list-style-type: none">• Freedom from disease and stains• Bright colour	40
<p>MANUFACTURE</p> <p>HEAD (15)</p> <ul style="list-style-type: none">• Uniform and symmetrical in shape <p>BODY (15)</p> <ul style="list-style-type: none">• Straw should be straight with no twists <p>DECORATION (10)</p> <ul style="list-style-type: none">• Tight, evenly spaced ribbon• Colour complimentary to straw	40



4-H Ontario Provincial Judging Competition 2023

Supported by Kubota Canada Ltd.

BAKED GOODS JUDGING CARD

	Perfect Score
FLAVOUR AND AROMA <ul style="list-style-type: none">• Appropriately sweet, salty, spicy, tart or bland, depending on product• Nice to mix of flavours, no one flavour is too strong• Appropriate aroma for the baked goods• Free from inappropriate odours	50
GENERAL APPEARANCE <ul style="list-style-type: none">• Pleasing, appetizing appearance• Appealing colour• Proper size and shape	25
INTERNAL APPEARANCE <ul style="list-style-type: none">• Appropriate texture for item• Even colour, appropriate to item• Free from streaks• Appetizing texture	25