



4-H Ontario Provincial Judging Competition 2024

Supported by Kubota Canada Ltd.





4-H Ontario Provincial Judging Competition 2024

Supported by Kubota Canada Ltd.

4-H Ontario Provincial Judging Competition 2024

Supported by Kubota Canada Ltd.

One of 4-H Ontario's core competencies is critical thinking. This skill is developed throughout all aspects of the 4-H Ontario program from the local club to provincial events and national events. Critical thinking is a foundational skill that allows people to succeed in all aspects of their lives within and outside of the 4-H Ontario program. These judging competitions were well received by participants and 4-H Ontario staff received requests for a provincial competition option. Learning from our volunteers across the province, 4-H Ontario is excited to be hosting a virtual Provincial 4-H Judging Competition open to all 4-H Ontario participants in 2024.

The competition will run from July 15 to August 15. A virtual award presentation will take place in August to recognize competitors, sponsors and volunteers involved in the competition.

OBJECTIVES OF THE COMPETITION

1. To provide youth, enrolled as a member in good standing with 4-H Ontario in 2024, to practice critical thinking skills through a provincial virtual judging competition.
2. To foster the future development of young judges for the agricultural industry in Canada.
3. To provide a high-profile and competitive judging experience for 4-H participants.

IMPORTANT DATES:

- July 15 – August 15: Judging competition is open and eligible for members to judge.
- Late August: Virtual evening award presentations

ELIGIBILITY:

1. Competitors must be 6 to 21 years of age as of December 31st, 2023.
The following are the categories:
 - Cloverbud: 6 to 8 years of age
 - Junior: 9 to 12 years of age
 - Intermediate: 13 to 15 years of age
 - Senior: 16 to 21 years of age

REGISTRATION

1. Registration is open, from the 4-H Ontario website. ([click here](#)) Each participant will be asked to create a login. Existing profiles from previous years are still active.
 - a. For passwords, please use same one as last year or reset password.
 - b. If you do not have an account from participating <https://4-hontariojudging.ca/>, create an account by clicking on the FORGOT YOUR PASSWORD OR NEED TO REGISTER? button the Log in.
 - i. If there is a blank screen after register or resetting password. Please refresh the page/go to the login page and use your login credentials.
 - c. If you are still having issues, please contact events@4-hontario.ca or digitalprogram@4-hontario.ca
2. Judging will be open from July 15th to August 15th.
3. Competition registration fee is at no charge.



4-H Ontario Provincial Judging Competition 2024

Supported by Kubota Canada Ltd.

CLASSES:

The Provincial 4-H Judging Competition will include classes representing the 4-H Canada Leadership Development Pillars: Sustainable Agriculture and Food Security, Community Engagement and Communications, Environment and Healthy Living, and Science and Technology. There will be a total of 8 classes for participants to judge, along with a general knowledge quiz.

The class listing includes:

1. Beef
2. Dairy
3. Sheep
4. Alpaca
5. Paintings
6. Smoothies
7. Flowers
8. First Aid Kits
9. General Knowledge quiz (25 questions)

Judging criteria can be found in this handbook for your reference.

AWARDS:

1. All competitors will be scored on their placings.
2. Prizes will be awarded to the top three (3) overall placings in each age category. Prizes are as follows:
 - 1st - \$200
 - 2nd - \$125
 - 3rd - \$75
3. Recognition will also be given to the top judge in each class.
4. In the case of ties, quiz scores will be used to determine final placing with the higher score breaking the tie. If there is still a tie, then a random draw will be done to select the winner.
5. Final placing announcement and award recognition will take place in late August.

The 4-H Ontario Provincial 4-H Judging Competition is a fun and interactive way to keep those critical thinking skills polished.

Any questions about the judging competition please reach out to Kathryn at events@4-hontario.ca

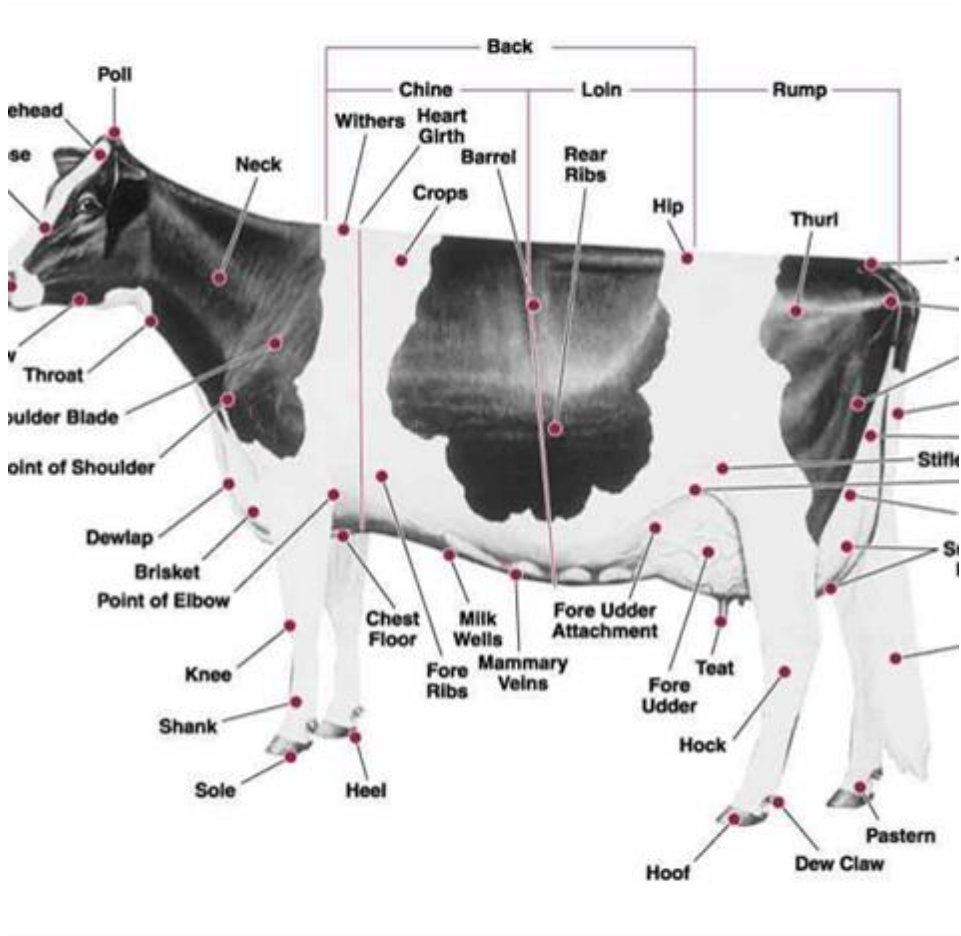


4-H Ontario Provincial Judging Competition 2024

Supported by Kubota Canada Ltd.

DAIRY CATTLE JUDGING CARD

	Perfect Score
<p>FEET AND LEGS</p> <ul style="list-style-type: none"> • Feet- short, well-rounded, deep heels • Legs- strong, flexible pasterns, straight square fore legs • Hind legs straight, wide, refined hocks • Flat, refined, strong bone with well-defined tendons 	40
<p>DAIRY STRENGTH</p> <ul style="list-style-type: none"> • Head- broad muzzle, large nostrils, strong jaw, broad forehead • Shoulder Blades- set smoothly against chest and withers • Chest- wide floor, ample width between legs • Heart Girth- large and deep, full elbows and well sprung rib • Crops- well filled • Back- strong and straight with vertebrate well defined • Loin- broad and slightly arched, attached high and wide • Mid-Section- long and wide ribs highly and widely sprung • Neck- long and lean, blending smoothly into shoulder • Withers- well defined and wedge-shaped, “sharp” • Ribs- wide apart, wide rib bones, flat and long • Flanks- deep and refined • Thighs- curving to flat, wide apart with ample udder room • Skin- loose and pliable, fine hair • Udder- soft, pliable, free from excess tissue or edema • Bone- flat, strong, clean cut 	40
<p>RUMP</p> <ul style="list-style-type: none"> • Hips- wide, slightly higher than pins • Pins- wide apart and free from patchiness • Thurler-high and wide apart, considering stage of lactation • Tail-head and Tail - refined and level with backline with long and slender tail 	20





4-H Ontario Provincial Judging Competition 2024

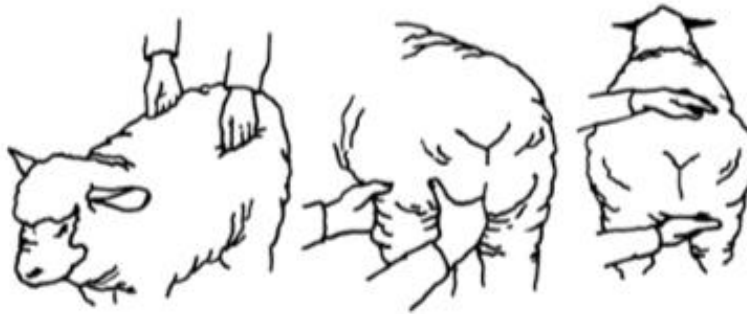
Supported by Kubota Canada Ltd.

SHEEP – BREEDING EWES JUDGING CARD

Perfect Score		
	Wool Breed	Meat Breed
BODY CONFIRMATION <ul style="list-style-type: none"> Skeletal structure Muscling, not over-conditioned Size and scale should conform to breed Sound mouth 	20	40
FEET, LEGS AND BONE <ul style="list-style-type: none"> Strong, straight legs with heavy bone Legs square under body Sound feet and legs Strong, flexible pasterns 	20	20
FLEECE <ul style="list-style-type: none"> Finest quality wool is found at shoulder Colour should conform to breed standard Consider length, wave and density Fleece should be uniform in fineness Clean and shiny Bright fleece and pink skin indicate health 	40	15
GENERAL APPEARANCE <ul style="list-style-type: none"> Overall appearance should be pleasing Desirable balance and blending of parts 	20	25

- Breed characteristics should be displayed
- Rams should be rugged with strong bone
- Ewes should be more refined

DETERMINING CONDITION AND MUSCLING:

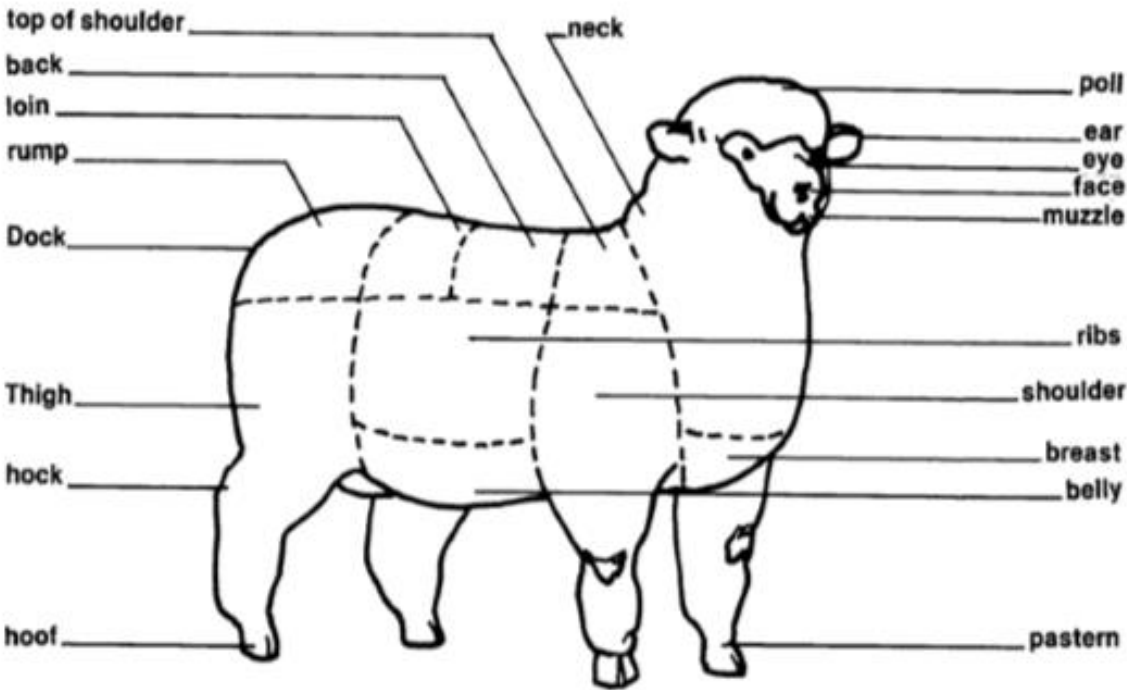


Checking width
of loin

Checking size
of leg

Checking depth
of twist

PARTS OF A SHEEP





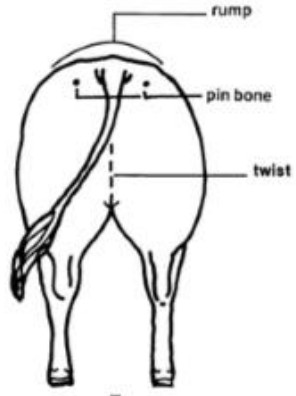
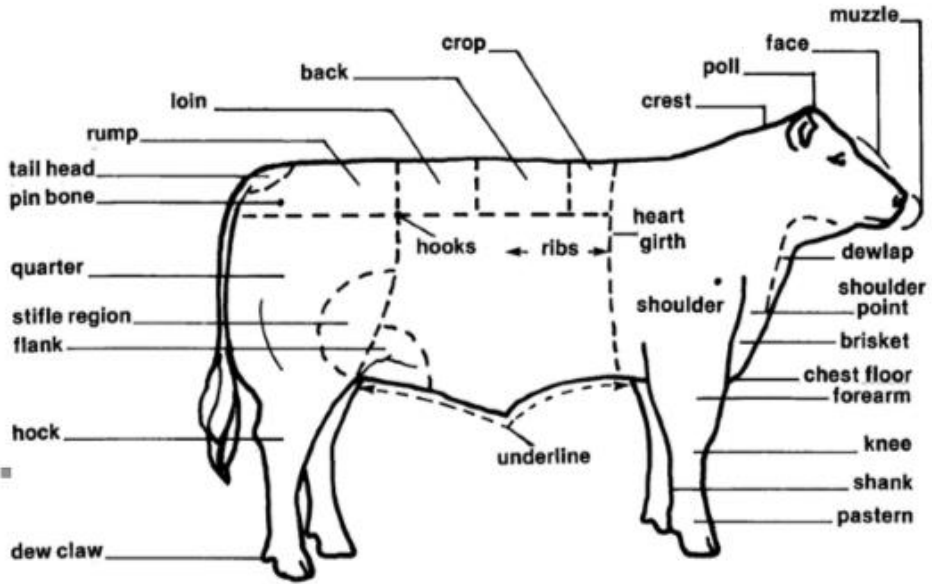
4-H Ontario Provincial Judging Competition 2024

Supported by Kubota Canada Ltd.

MARKET STEERS JUDGING CARD

	Perfect Score
SKELETAL STRUCTURE <ul style="list-style-type: none">• Shows good size and scale with length of body, rump and large hind quarter• Structurally sound on pasterns, hocks and legs• Strong on topline and through loin• Walks easily and freely on feet and legs	20
SIZE AND SCALE <ul style="list-style-type: none">• Feet- large frame, long body and rump• Muscling ripples when animal moves• Muscles bulge and appear in bunches, not smooth areas	20
FEET AND LEGS <ul style="list-style-type: none">• Breeding stock requires correct feet and legs to move and remain useful for many years	20
SEX CHARACTER <ul style="list-style-type: none">• Shows femininity about head, neck and shoulders• Well-developed, strongly attached, balanced udder with four evenly spaced and functioning teats	15
CONDITION <ul style="list-style-type: none">• Consider rate of gain, weight, muscle growth• Adequate, but not excess condition (fat covering)• Consider muscling and skeletal structure	15
MUSCLING <ul style="list-style-type: none">• Shows good muscling in rear quarter	10

PARTS OF THE BEEF ANIMAL



bow legged



correct



cow hocked



rear leg: correct pastern set



rear leg: weak pastern



4-H Ontario Provincial Judging Competition 2024

Supported by Kubota Canada Ltd.



4-H Ontario Provincial Judging Competition 2024

Supported by Kubota Canada Ltd.

ALPACA JUDGING CARD

Perfect Score	
GENERAL APPEARANCE <ul style="list-style-type: none">• More stylish appearance• More eye appeal – oval, large and round, alert and is set well apart. Protrude slightly from socket• Ears medium length, covered with short soft hair• Structurally sound• The head has a strong appearance. Neatly formed of medium length with square face• Body is deep through the girth, well-spring ribs. Back is strong and the top-line slightly convex.• Loins are broad, strong and flat, with the back barrel large and deep.• Neck is long and slender, blending smoothly into the shoulders.	40
FLEECE UNIFORMITY <ul style="list-style-type: none">• Evenness and regularity of colour through the entire fleece• Evenness and uniform length through the entire fleece• Fleece should be free clean and free from debris• Ability to reflect light	30
CONDITION <ul style="list-style-type: none">• Consider rate of gain, weight, muscle growth• Adequate, but not excess condition (fat covering)• Consider muscling and skeletal structure	30

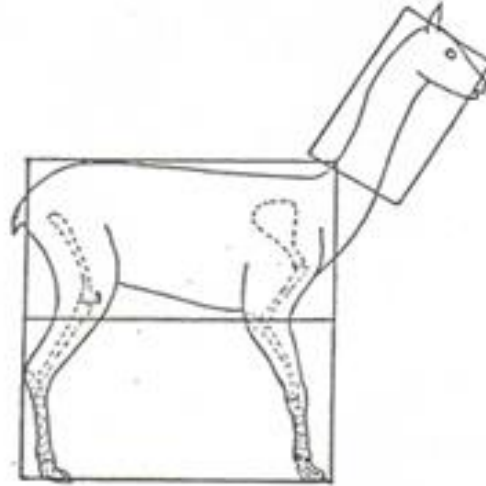


Figure 20. Ideal conformation, illustrated within rectangles. The neck rectangle is the length of the leg.



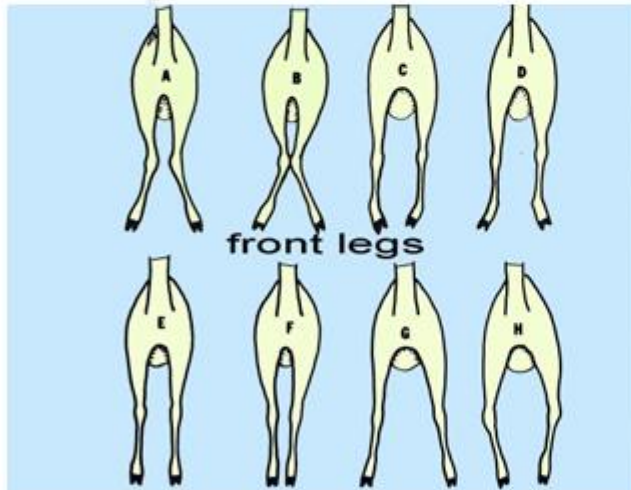
**SLIGHT
KNOCKED KNEES**



**MODERATE
KNOCKED KNEES**



**SEVERE
CALF KNEED**



- A. Moderate knock knee
- B. Severe knock knee
- C. Pigeon toed
- D. Splayed foot
- E. NORMAL
- F. Base narrow
- G. Base wide
- H. Bow legged



4-H Ontario Provincial Judging Competition 2024

Supported by Kubota Canada Ltd.

ACCURACY OF IDENTIFICATION <ul style="list-style-type: none">• Case: Easily Identifiable• Contents: Labeled and easy to access materials, neat, visible, and easy to read.	40
SUITABILITY <ul style="list-style-type: none">• Container suitable, sturdy, clean, appropriate size for contents, waterproof, suited to intended use, and neatly organized.• First Aid Kit contains adequate materials for intended use and is appropriate size for needs for example- portable for trips, attachable to wall if required, suitable for potential group size.	40
APPEARANCE <ul style="list-style-type: none">• Contains adequate supplies to treat life threatening injuries; i.e. bandages, dressings, first aid book• Contains first aid items for a variety of ailments that may occur during intended use- camping, home, workplace or outbuilding.• Contains only first aid items.	20



4-H Ontario Provincial Judging Competition 2024

Supported by Kubota Canada Ltd.

Flowers

	Perfect Score
CONDITION <ul style="list-style-type: none">• Free of damage from machine, insect, disease or spray• Flowers and foliage have been well grown and groomed• Bloom quality and with strong future blooms	30
FORM AND COLOUR <ul style="list-style-type: none">• Uniform growth habit• Proper stage of maturity• Form characters of flower• Fresh, bright, even colour	45
FOLIAGE <ul style="list-style-type: none">• Stems in good proportion to blooms	25
SIZE <ul style="list-style-type: none">• Specimens uniform in size, form and colour• Well-grown	10



4-H Ontario Provincial Judging Competition 2024

Supported by Kubota Canada Ltd.

PAINTING JUDGING CARD

Perfect Score	
IMPACT & STYLE <ul style="list-style-type: none">• Does it catch your attention• Clarity/focus of desire image• Applying the best of elements and principles of design	20
TECHNIQUE <ul style="list-style-type: none">• Controlled brush techniques and movement<ul style="list-style-type: none">• Are the brush strokes controlled and creating desired look?• Is the painting being mixed appropriately?• Good rhythm of colour and design• Does it tell a story/Can you read what the image is portraying• Free of muddy colours, ragged edges, drips	40
Colour <ul style="list-style-type: none">• Creative use of colour<ul style="list-style-type: none">○ Understand colour relationship and hues to make an Indepth image• Is there a strong source of lighting or is the image flat	40



4-H Ontario Provincial Judging Competition 2024

Supported by Kubota Canada Ltd.

SMOOTHIE JUDGING CARD

	Perfect Score
FLAVOUR AND AROMA <ul style="list-style-type: none">• Appropriately sweet, salty, spicy, tart or bland, depending on product• Nice to mix of flavours, no one flavour is too strong• Creative use of ingredients	40
GENERAL APPEARANCE <ul style="list-style-type: none">• Pleasing, appetizing appearance• Appealing colour• Proper amount	20
INTERNAL ASSETS - NUTRITION <ul style="list-style-type: none">• Appropriate amount of nutrients for goal• Even colour, appropriate to item• Appetizing texture• Appropriate amount of High protein, low calorie, sugars and fats	40